

## Gildemeister NEF 600 V1



CNC - lathe machine

---

Machine type: Gildemeister NEF 600 V1

---

Control: Heidenhain IT Turn Plus

---

Year: 2008

---



Alle Maschinen optional mit

✓ **SERVICE-PAKET**

Abbau - Verladung - Transport - Inbetriebnahme

**SPECIFICATIONS:**

---

Max. turning length: 1.250  
[mm]

---

Max. swing over bed: 600  
[mm]

---

Max. swing over slide: 410  
[mm]

---

Spindle bore: [mm] 90

---

Amount of controlled  
axes: 2

---

Spindle speeds: [rpm] 3.000

---

Spindle power: [kW] 36,5 / 27,5

---

Torque: [Nm] 785

---

Tailstock MK 5

---

Quill 80mm

---

Amount of turrets: 1

---

Path X-Axes upper rev. VDI 40/8  
/ lower rev.:

---

Tool capacity: 8

---

Machine weight: [kg] 5.500

---

**Equipment:**

---

Chip conveyor

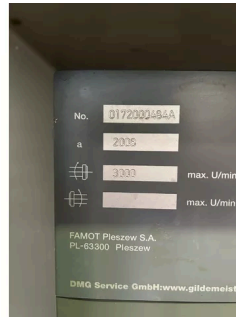
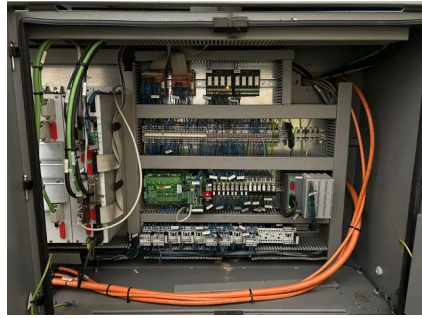
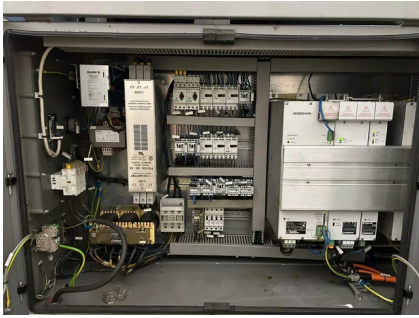
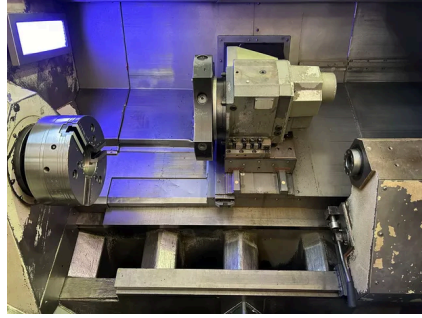
---

ohne Absaugung /  
sans Aspiration

---

---

Req. space (LxBxH): 5,0 x 2,0 x 2,2 m  
[m]



+49 (0)611 5 10 1990    info@stenzel.de