

## Okuma LT 2000 2T2MY



CNC Turning / Millingcenter

---

Machine type: Okuma LT 2000 2T2MY

---

Control: OSP-P200L

---

Year: 2019

---



Alle Maschinen optional mit

✓ **SERVICE-PAKET**

Abbau - Verladung - Transport - Inbetriebnahme

**SPECIFICATIONS:**

---

Max. turning length: 700  
[mm]

---

Turningdiameter: [mm] 165 / 210 (Standart)

---

Max. swing over bed: 400  
[mm]

---

Between centers: 990  
[mm]

---

Spindle bore: [mm] 62

---

Bar capacity: [mm] 52

---

Spindle nose: 6

---

C-Axis 0,001°

---

---

**Main Spindle**

---

Spindle speeds: [rpm] 50 - 5.000

---

Spindle power: [kW] 22

---

Chuck main spindle Kitagawa BB-208

---

---

**Subspindle**

---

Max. revolution: [rpm] 6.000

---

Spindle power: [kW] 22

---

Bar capacity: [mm] 52

---

3-jaw chuck [mm] Kitagawa B-208

---

---

**Equipment:**

---

Chip conveyor

---

cooling system Kühlmittel-Temperierung  
für Trommel-Muldenfilter  
TMF 300

---

---

Interface Set Robot-Loader-Interface

---

---

Amount of turrets: 2

---

Tool:

---

Tool capacity: 16 + 16

---

Driven Tools 16 + 16

---

revolution driven tools 50 - 6.000

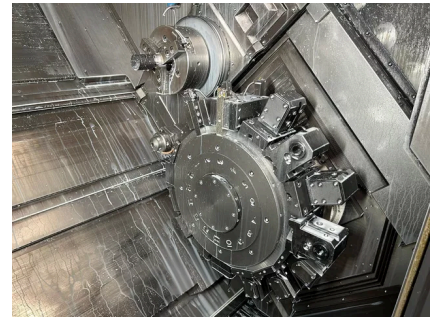
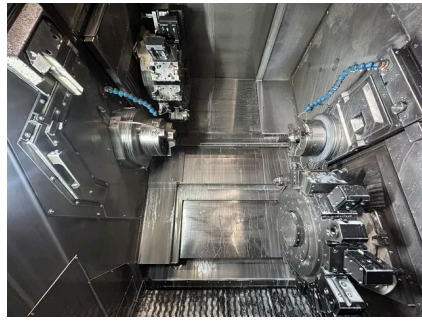
---

Spindle power: [kW] 5,5

---

Y-Axis: [+/- mm] 2 x 50/-45

---



+49 (0)611 5 10 1990    [info@stenzel.de](mailto:info@stenzel.de)