

## POSmill E 2050



Vertical machining center

---

Machine type: POSmill E 2050

---

Control: Heidenhain iTNC 530

---

Year: 2013

---

Power on time: [h] 16.442

---

Spindle running time: 4.200  
[h]



Alle Maschinen optional mit  
 **SERVICE-PAKET**

Abbau - Verladung - Transport - Inbetriebnahme

**SPECIFICATIONS:**

---

Travel:

---

X-Axis: [mm]                    2.050

---

Y-Axis: [mm]                    1.150

---

Z-Axis: [mm]                    700

---

Rapid motion: (X/Y/Z)        25  
[m/min.]

---

Feed: (X/Y/Z) [m/min.]        10

---

---

Spindle speeds: [rpm]         12.000

---

Tool:                                SK 40

---

Tool capacity:                    40

---

---

Table size: [mm]                2.200 x 1.000

---

Max. Table Load: [kg]         6.000

---

---

**Equipment:**

---

Chip conveyor

---

Internal cooling: [bar]

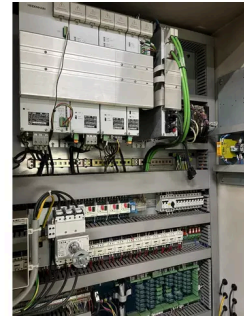
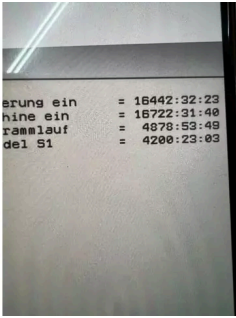
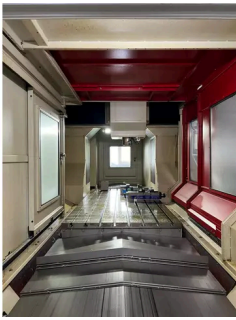
---

Electronical handwheel

---

Caliper

---



+49 (0)611 5 10 1990    [info@stenzel.de](mailto:info@stenzel.de)